



Fitout Pack 2025

Trusted Commercial Flooring Across the UK

www.fitoutflooring.com | info@fitoutflooring.com | 01483 808 570

All photography © Fitout Flooring Ltd. Images represent actual installations completed by our team.

About Fitout Flooring

At **Fitout Flooring**, we partner with businesses to bring design, durability, and compliance into every commercial space.

- 🕒 50+ years' combined experience across healthcare, education, leisure, retail, offices and gyms
- 🏆 Award-winning – Best Commercial Flooring Contractor, Surrey (Build Construction & Engineering Awards)
- 🛡️ 1-Year Installation Guarantee plus manufacturer warranties
- 📄 CHAS Approved & Builder's Profile Compliant, with full health & safety credentials
- 🌟 Proud to have supported **BBC DIY SOS for Children in Need**

With Fitout Flooring, you're not just hiring installers - you're gaining a team committed to **excellence, reliability, and your long-term results.**

Fitout Flooring is **fully accredited and compliant**, giving you peace of mind on every project.

✅ **CHAS Approved**

Demonstrating our commitment to health & safety

✅ **Fully Insured**

Certificates available on request

✅ **Builder's Profile Compliant**

Ensuring full transparency and reliability

✅ **Comprehensive Policies**

Health & Safety, Environmental, and Corporate Responsibility policies in place



Supporting BBC Children in Need with DIY SOS

Our Approach

Flooring isn't just a finish - it's a foundation. At Fitout Flooring, our method is built on four guiding principles that ensure every installation performs for years to come.



Quality

We never compromise on quality. All of our installers are highly trained and regularly assessed to ensure consistent standards.

Every project is carefully managed, from surface preparation through to final fitting, giving you confidence that your flooring is designed to last.



Guarantee

Every installation is backed by our 1-year Fitout Flooring guarantee, alongside full manufacturer warranties.

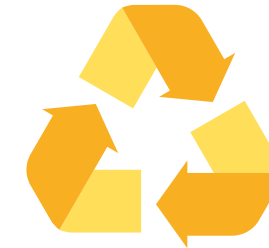
This means you can be confident not only in the craftsmanship of our work, but also in the durability and performance of the products we install.



Safety & Compliance

Health and safety sits at the heart of everything we do. We are proud to be CHAS Approved and Builder's Profile Compliant, and all works are carried out in full accordance with our company policies.

Our dedicated Health & Safety, Environmental, and Corporate Responsibility policies ensure we deliver projects responsibly, with the wellbeing of our teams, clients, and end users as our top priority. Copies of all policies and insurance certificates are available on request.



Sustainability

We recognise the importance of making responsible choices. That's why we use eco-conscious materials where possible, reduce waste through careful planning, and partner with suppliers who share our commitment to sustainable practices.

We also offer guidance on flooring solutions that improve efficiency and environmental performance.

With our approach, you can expect projects delivered **on time, on budget, and built to stand the test of time.**

Industries We Serve

Office | Education | Healthcare | Hospitality & Leisure | Fitness | Retail

Office & Workplace Flooring Solutions

Office flooring defines both the **look and feel** of your workspace.

From open-plan offices to breakout areas, we design and install surfaces that enhance productivity, comfort, and brand identity.

Benefits include:

- **Professional Aesthetic** – a wide range of carpet tiles, LVT, and vinyl options to suit your brand identity and design vision
- **Acoustic Comfort** – flooring solutions that reduce noise levels and support concentration in open-plan environments
- **Durability & Maintenance** – high-performance materials designed for longevity and easy cleaning in busy offices
- **Safety & Compliance** – slip-resistant finishes and expert installation in accordance with all regulations
- **Flexible & Efficient Installation** – fast, efficient fitting around business hours to minimise disruption



From corporate offices and co-working hubs to commercial fitouts, Fitout Flooring helps create **smart, sustainable, and comfortable workplaces** that look as good as they perform.

Education Flooring Solutions

Educational spaces need flooring that's **hard-wearing, safe, and inspiring** - designed for the energy of everyday learning.

We understand that schools and colleges often work within **tight budgets**, but that doesn't mean compromising on **quality or safety**. Our solutions provide lasting performance and value for money.

Benefits include:

- **Durability & Safety** – tough, slip-resistant surfaces built to withstand heavy footfall and daily use
- **Acoustic Performance** – solutions that reduce noise in classrooms and lecture halls, improving focus and comfort
- **Low Maintenance** – easy-to-clean materials for quick turnaround and long-term value
- **Design Versatility** – a wide range of colours, patterns, and textures to create bright, engaging spaces
- **Specialist Areas** – sports flooring, wet areas, and breakout zones tailored to each environment

Fitout Flooring helps create **comfortable, practical, and inspiring places to learn and grow.**



Healthcare Flooring Solutions

Healthcare settings demand flooring that supports **care, hygiene, and calm**. Each space, from wards and corridors to waiting areas, requires surfaces that meet different performance and safety needs.

Fitout Flooring partners with leading manufacturers to deliver solutions that meet **clinical standards** while improving comfort for patients, visitors, and staff alike.

- **Hygienic Performance** – impervious, easy-clean finishes to support infection control
- **Safety & Compliance** – slip-resistant materials installed to healthcare regulations
- **Comfort Underfoot** – reducing fatigue for long shifts and improving patient well being
- **Acoustic Control** – flooring that quietens busy corridors and waiting spaces
- **Specialist Guidance** – advice on electrostatic control, acoustic vinyl, and safety surfaces

We create **safe, supportive, and compliant environments** that perform under daily demands.



Hospitality & Leisure Flooring Solutions

Hospitality and leisure environments require flooring that's both **beautiful and built to perform**. From restaurants and hotels to spas and entertainment venues, your floors need to handle constant traffic while complementing the overall design.

Functionality, durability, and design are key requirements for flooring within these diverse spaces - along with **conformance to internationally recognised standards** for fire, slip, and abrasion resistance. At **Fitout Flooring**, we install systems that meet those standards while delivering comfort, safety, and style.

Benefits include:

- **Design & Ambience** – flooring that enhances interiors and reinforces your brand aesthetic
- **Durability & Maintenance** – robust finishes that resist stains, moisture, and daily wear
- **Safety & Compliance** – tested for fire, slip, and abrasion resistance to meet all industry regulations
- **Acoustic Control** – materials that absorb sound and create calm, comfortable environments
- **Versatility** – luxury vinyl, rubber, carpet tiles and decorative flooring for receptions, restaurants, gyms, and spa areas



Our installations help hospitality and leisure venues achieve **welcoming, resilient, and compliant spaces** that elevate the guest experience without compromising on performance.

Fitness Flooring Solutions

Gym environments demand more than just flooring - they require **resilience, performance, and integration.**

Fitout Flooring combines both function and design to deliver surfaces that amplify the training experience.

We provide a range of flooring solutions designed to support athletes and aid their training:

- **Performance Turf** – available in multiple colours, fully customisable with water-jet cut line markings and personalised logos. Built to handle functional training impact while adding energy to your space.
- **CV & Plate-Loaded Areas** – robust, cost-effective flooring that protects subfloors, reduces impact sound, and improves safety.
- **Free Weights Zones** – impact-resistant and slip-resistant surfaces to withstand drops, reduce risk, and extend flooring life.
- **Easy Maintenance** – all solutions are designed to be easy to clean and maintain, even in high-traffic gyms.



No matter your gym's size or style, we deliver **flooring systems that outlast expectations.**

Retail Flooring Solutions

Retail environments need flooring that **looks outstanding and performs under pressure**. At **Fitout Flooring**, we install systems that combine **design, strength, and practicality**, helping stores create inviting spaces that last.

Performance, presentation, and longevity are at the heart of every retail space - flooring must withstand heavy traffic while maintaining its visual appeal. Our team offers expert guidance on material selection, ensuring every surface reinforces your **brand identity and customer experience**.

Benefits include:

- **Design Versatility** – a wide range of finishes and textures to elevate your store aesthetic and brand experience
- **Everyday Strength** – resilient flooring built to handle trolleys, displays, and constant customer traffic
- **Safety You Can Trust** – fire-rated and slip-secure materials installed to meet retail safety standards
- **Acoustic Comfort** – reduces background noise, creating a calm and enjoyable shopping atmosphere
- **Effortless Maintenance** – quick to clean, easy to refresh, and built for long-term performance

Our installations help retailers achieve **beautiful, practical, and brand-focused environments** that perform day after day.



Projects / Case Studies

We're **proud** to deliver flooring solutions that combine performance, safety, and visual impact across a range of sectors. Every project we complete reflects **our commitment to quality, attention to detail, and reliable service** from start to finish.

***Trusted** by gyms, schools, hospitals, retailers, and contractors **nationwide**.*

Project: Ryans Speciality

Location: Fenchurch Avenue, London

Sector: Office & Workplace

Overview

Fitout Flooring was appointed to deliver a full flooring package for Ryans Speciality at their new offices in the heart of the City of London.

This large-scale project required a variety of high-end finishes across multiple levels, combining performance, design, and precision installation.

Solution

Our team supplied and installed over 3,600m² of flooring, including:

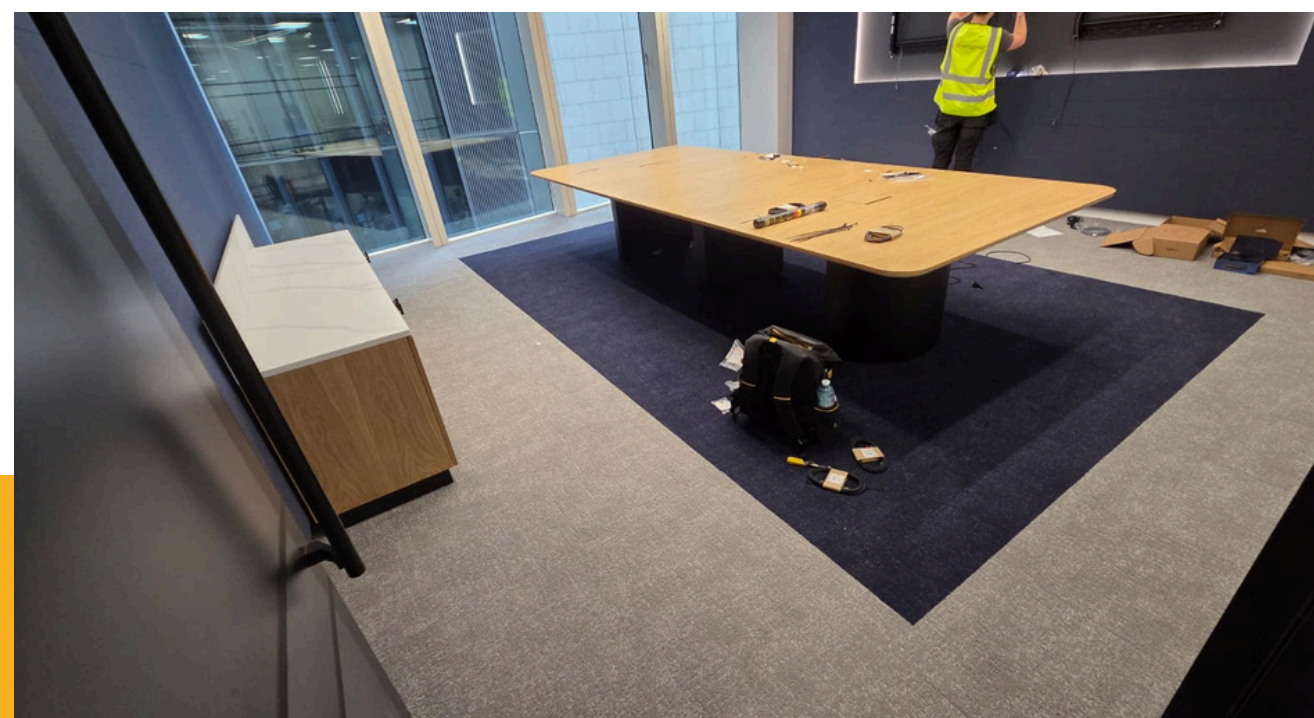
- 3,000m² – Milliken Tracing Landscapes (main office areas)
- 105m² – Havwoods Engineered Oak Timber (HW2503 Maison 1800mm plank)
- 50m² – Polyflor Polysafe Standard (wet areas)
- 50m² – Forbo Colorex SD (SD 150262 Nebo, for static control zones)
- 240m² – Moduleo Intoo Fiastra 46935
- 120m² – Moduleo Intoo Mattina 46930
- 75m² – Amtico Access Collection – Mountain Oak

This mix of materials was carefully selected to meet the specific needs of each space - from static control and safety requirements to premium aesthetic zones such as boardrooms and client areas.

Results

- Over 3,600m² of high-performance flooring installed across multiple building levels.
- Combination of premium design finishes and functional technical products.
- Smooth coordination with contractors to meet programme deadlines.

This project demonstrates Fitout Flooring's capability to deliver large-scale, multi-material installations for high-profile corporate clients in demanding environments.





Project: Taiwan Embassy

Location: 46–48 Grosvenor Gardens, London
Sector: Government Office Fitout

Overview

Fitout Flooring was appointed to supply and install premium flooring throughout the Taiwan Embassy in London.

The project required elegant, durable, and low-maintenance materials that complemented the building's formal setting and high-traffic requirements.

Solution

Our team delivered a total of 1,300m² of high-quality flooring, including:

- 1,100m² – Forbo Tessera Tevio (main office and circulation areas)
- 200m² – Moduleo Intoo Laurel Oak 51229 (meeting rooms and reception zones)

Each product was carefully selected for its aesthetic appeal, resilience, and comfort underfoot - balancing traditional style with modern performance.

Results

- Seamless installation across mixed-use office and reception spaces
- Durable and elegant finishes suited to a formal, high-profile environment
- Completed to specification and schedule within a sensitive government setting



This project demonstrates Fitout Flooring's ability to deliver premium installations within high-security and prestigious office environments.

Project: Trafalgar House

Location: Brighton

Sector: Office & Workplace

Overview

Fitout Flooring was appointed to complete a full flooring fitout at Trafalgar House in Brighton. The project required a blend of modern design and durability to suit office, breakout, and collaboration spaces within a busy commercial environment.

Solution

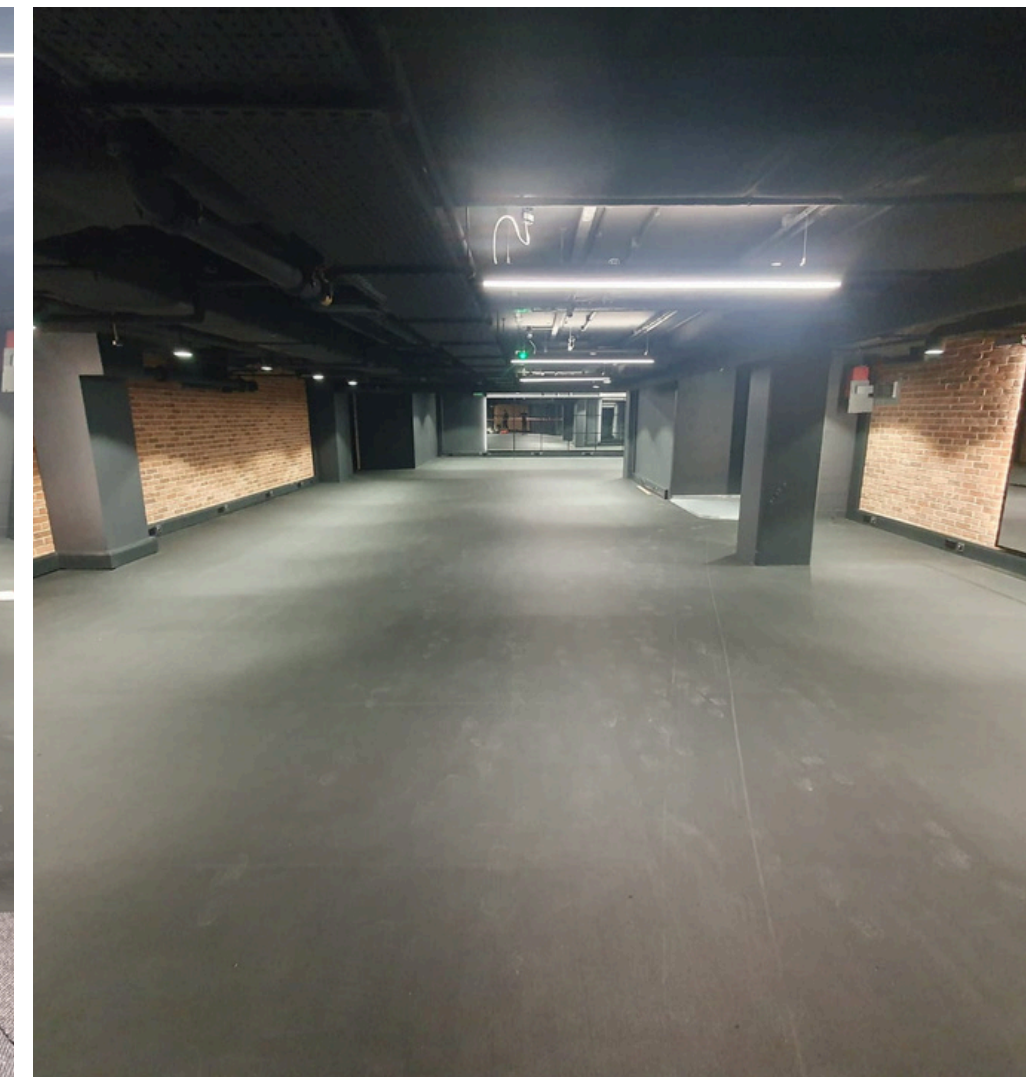
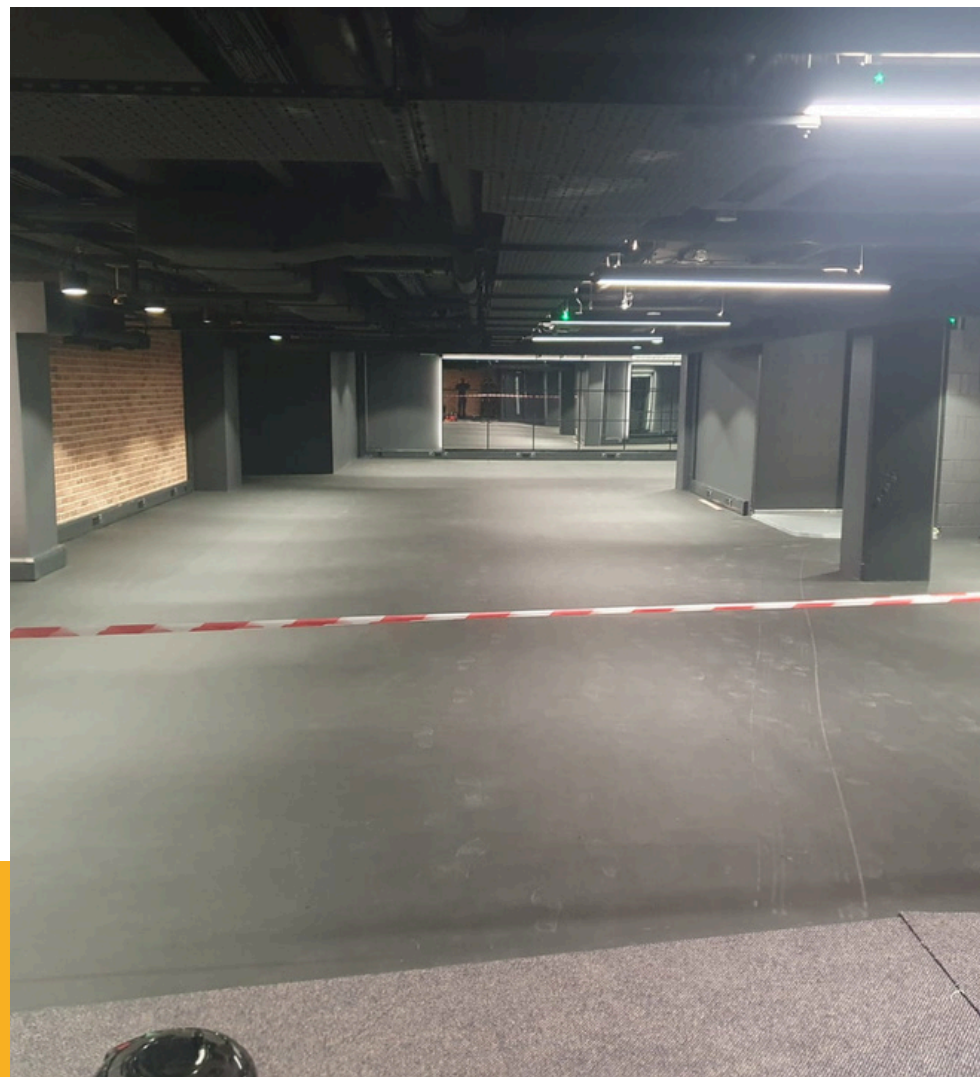
Our team supplied and installed a total of 995m² of high-performance flooring across multiple areas of the building, including:

- 630m² – IVC Rudiments Clay 975 (main office areas)
- 215m² – IVC Carpet Tile Brutt 545 Imperfection (meeting rooms and breakout zones)
- 150m² – Tarkett Dropzone Speckle 8mm Black (entrance and circulation zones)

Each product was selected for its aesthetic quality, resilience, and acoustic performance, ensuring the building's interior matched its contemporary architectural design.

Results

- Cohesive design aesthetic achieved across open-plan and enclosed office areas
- Durable, easy-to-maintain surfaces suitable for high-traffic commercial use
- Delivered on programme in coordination with contractors project team



This project highlights Fitout Flooring's ability to deliver precision installations and design-led finishes for modern workplace environments.



Project: Leeds Hospital

Location: Leeds

Sector: Healthcare

Overview

Fitout Flooring was contracted to complete a specialist flooring installation at Leeds Hospital, delivering a high-quality, hygienic finish suited to clinical and patient areas.

The project required flooring solutions that offered safety, durability, and ease of maintenance within a live healthcare environment.

Solution

Our team installed:

- 170m² – Altro Walkway (Waterfall) – installed throughout corridors to provide slip resistance and durability in high-traffic areas.
- 120m² – Tarkett Ruby 70 (Natural Oak) – fitted within ward rooms for a warm, comfortable, and easy-to-clean finish.

All installations were carried out to strict healthcare compliance standards, ensuring a safe, hygienic, and long-lasting result.

Results

- Enhanced safety and hygiene across ward and corridor areas.
- Slip-resistant and easy-maintenance flooring improving patient and staff wellbeing.
- Completed on schedule and to healthcare specification standards.

This project showcases Fitout Flooring's ability to deliver clinical-grade installations with precision and care in sensitive, live environments.

Project: Bunn Leisure Holiday Park

Location: Chichester, West Sussex

Sector: Hospitality & Leisure

Overview

Fitout Flooring had the pleasure of working with Bunn Leisure Holiday Park to deliver a series of high-performance flooring installations across multiple leisure spaces - including the arcade, café, kitchen, and lobby areas.

The client required durable, visually consistent flooring that could withstand high foot traffic while maintaining an inviting and easy-to-clean finish throughout the resort.

Solution

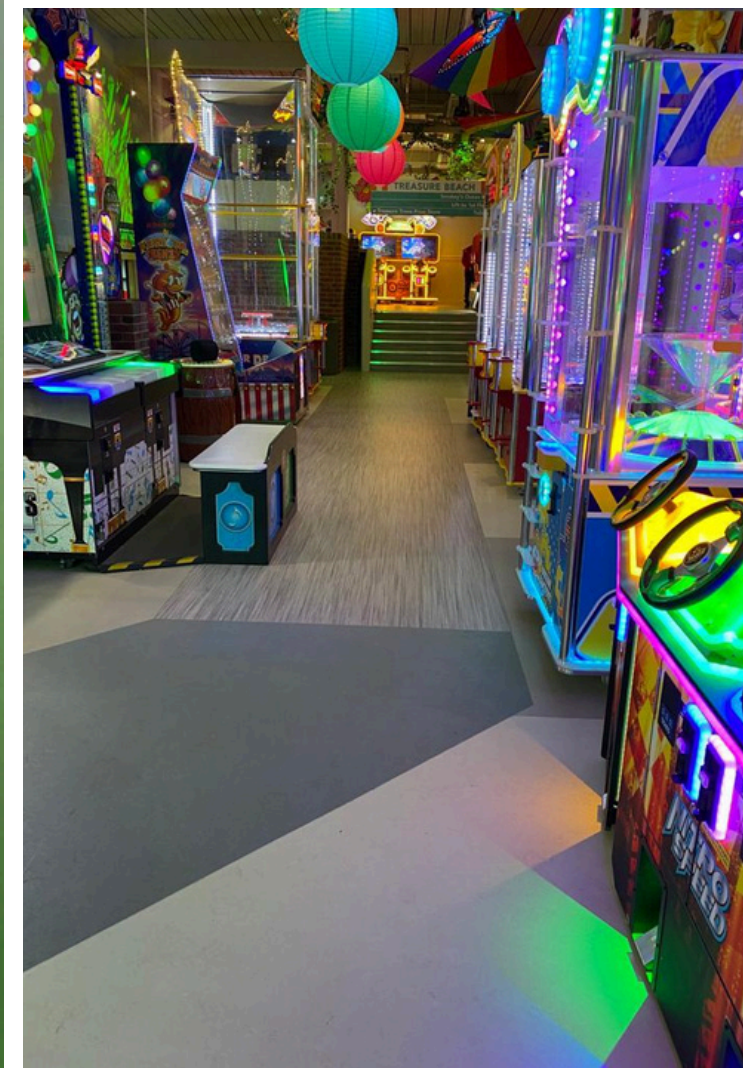
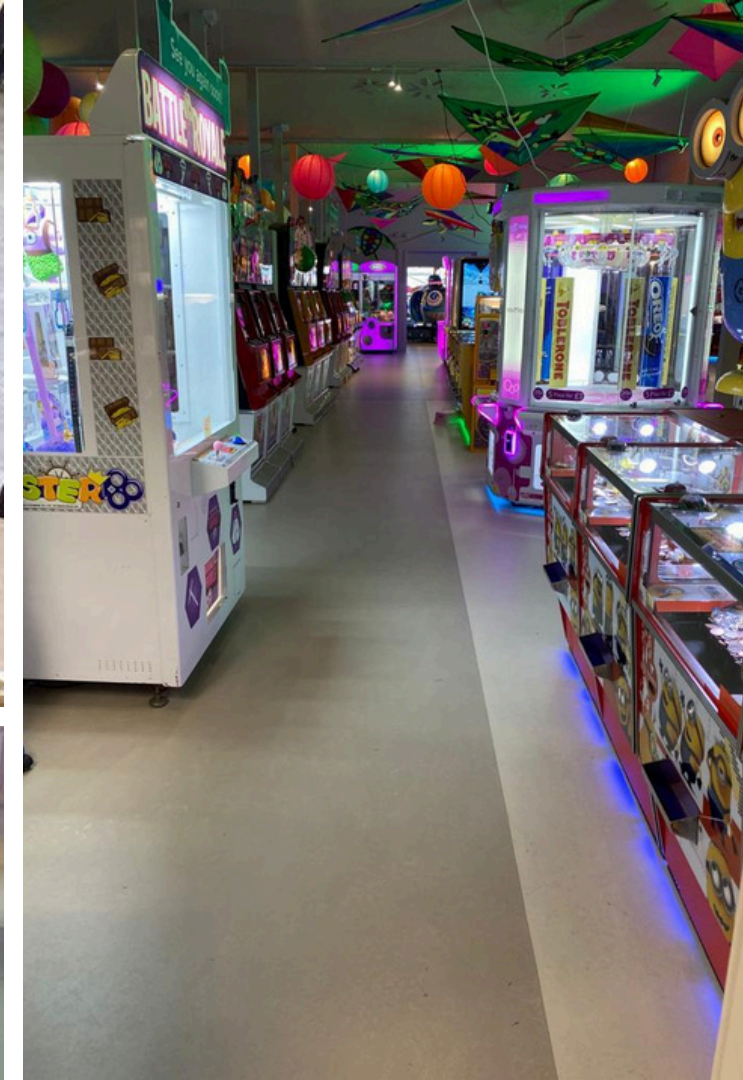
Our team supplied and installed a variety of floor coverings to suit each functional area, including:

- Forbo, Karndean, and Moduleo flooring systems for durability, design flexibility, and ease of maintenance.
- Slip-resistant vinyl for back-of-house areas and kitchens.
- Decorative wood-effect finishes for public zones, creating a cohesive, premium look.

Results

- Cohesive design aesthetic across multiple high-traffic leisure spaces.
- Enhanced durability and easy cleaning for busy hospitality operations.
- Installation completed efficiently with minimal disruption to the site.

This project highlights Fitout Flooring's expertise in delivering multi-environment solutions that balance safety, functionality, and design appeal.



Southbury Leisure Centre

Location: Enfield, London

Sector: Leisure

Overview

At Southbury Leisure Centre, Fitout Flooring was appointed to refurbish and upgrade the soft play and toilet areas, replacing tired floor finishes with new high-performance materials. The client required durable, slip-resistant, and easy-to-clean flooring suitable for high-traffic, family-oriented spaces.

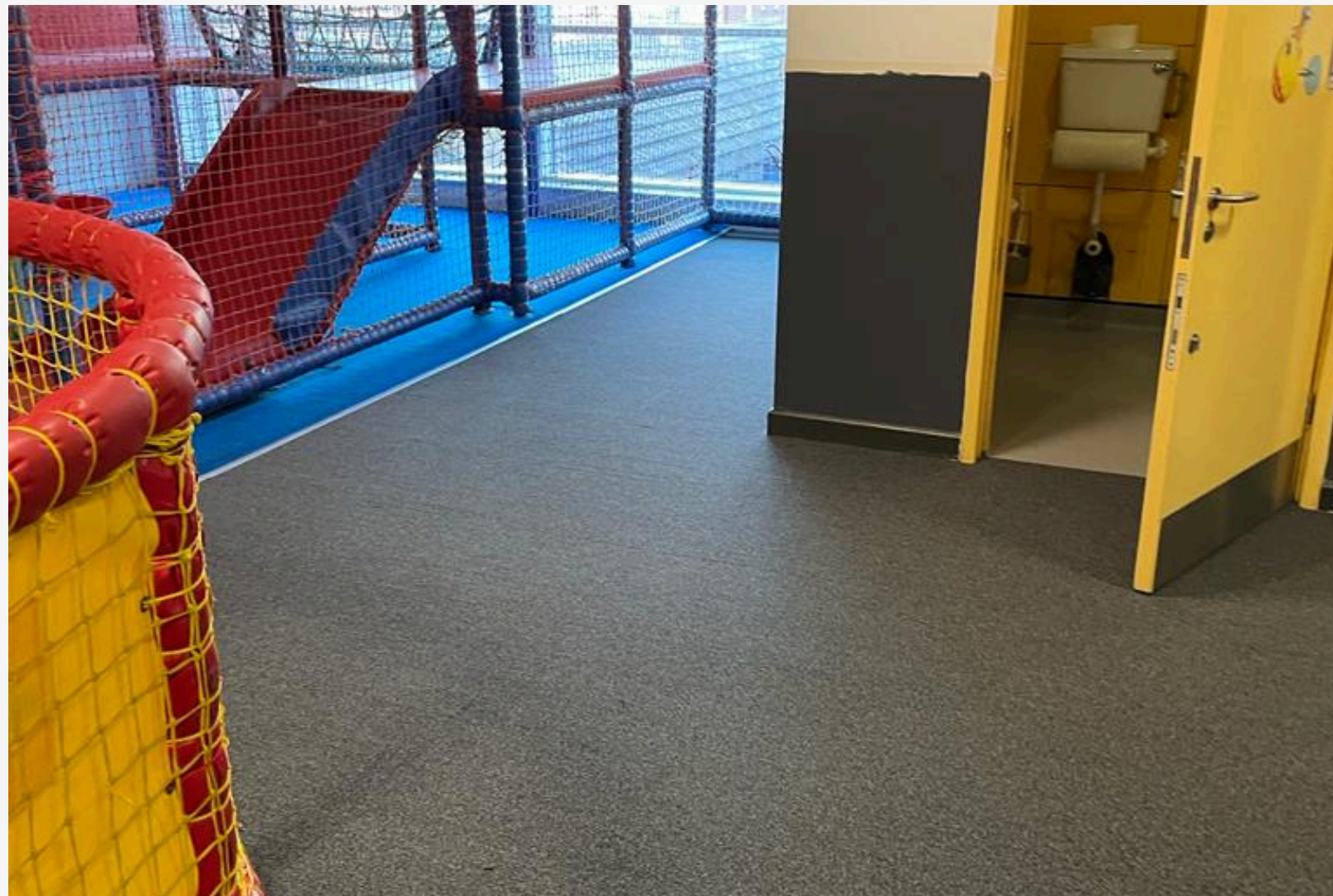
Solution

Our team uplifted and disposed of the existing carpet and vinyl, then prepared all subfloors before installing over 200m² of Forbo safety vinyl and carpet. The combination of products provided excellent slip resistance, hygiene performance, and long-term durability - ideal for both play and hygiene-critical areas.

Results

- Refreshed soft play and toilet areas with improved safety and appearance
- Long-lasting, low-maintenance surfaces that meet community leisure standards
- Efficient installation completed on schedule with minimal disruption to operations

This project demonstrates Fitout Flooring's ability to deliver safe, practical, and efficient flooring refurbishments for busy community and leisure venues.



Camberley Leisure Centre

Location: Camberley, Surrey

Sector: Leisure & Fitness

Overview

Fitout Flooring was proud to help deliver the new Camberley Leisure Centre - a modern, multi-purpose facility designed for the local community. Our brief was to supply and install flooring across a variety of environments, each with unique functional and aesthetic requirements.

Solution

We installed high-performance flooring throughout the centre, including:

- Main Gym Facilities – impact-resistant rubber flooring for strength and durability
- Yoga & Dance Studios – smooth, resilient surfaces designed for comfort and movement
- Café (Costa Coffee) – stylish, easy-to-clean finishes suitable for high footfall and spill resistance
- Lobby & Circulation Areas – durable vinyl and safety flooring for long-lasting wear and ease of maintenance

Our team coordinated closely with the main contractor and project stakeholders to ensure each space met both design intent and safety standards.

Results

- Multi-area installation completed to a tight new-build programme
- Flooring designed to enhance both performance and aesthetics across varied environments
- Continued partnership success with Places for People / Places Leisure

This project demonstrates Fitout Flooring's expertise in multi-zone installations for complex leisure facilities - balancing functionality, design, and reliability across every area.





Project: Aldershot Lido

Location: Aldershot, Hampshire

Sector: Leisure & Outdoor Fitness

Overview

Fitout Flooring was trusted to deliver a complete flooring refurbishment for Aldershot Leisure Centre's outdoor Lido and indoor gym areas. The project required durable, weather-resistant flooring for the poolside and functional, high-performance flooring for the gym - both installed to tight timeframes during the seasonal closure period.

Solution

Our team:

- Stripped and removed the existing worn turf surrounding the outdoor Lido.
- Prepared and installed 750m² of brand-new Astroturf, providing a safe, non-slip, and visually refreshed poolside surface.
- Refitted the interior gym with performance flooring designed to handle heavy equipment and high foot traffic.

The installations were completed efficiently, maintaining the high standards expected on all sites.



Results

- 750m² of outdoor turf replaced, improving safety and visual appeal around the Lido.
- Enhanced gym performance flooring improving functionality and comfort for users.
- Delivered on schedule, ahead of the summer reopening season.

This project highlights Fitout Flooring's ability to deliver large-scale, multi-environment refurbishments - from outdoor leisure spaces to indoor fitness areas - with precision and reliability.

Manufacturers & Supply Partners

Our Trusted Manufacturers

We partner with **leading flooring brands** to deliver quality, safety, and design excellence across every project.

Fitout Flooring is proud to be an **approved Maintenance and Installation Contractor** for both Forbo and Junckers, working alongside a trusted network of suppliers to ensure every product meets our performance standards.



Why Choose Fitout Flooring?

At **Fitout Flooring**, we don't just fit floors - we create environments built on **craftsmanship, reliability, and trust**. From first consultation to final handover, every project is delivered with precision, transparency, and care.

What sets us apart:

- **Proven Experience** – decades of combined expertise across commercial, healthcare, education, and leisure sectors
- **Trusted Partnerships** – trusted by major UK leisure, commercial, and construction clients to deliver flooring solutions that last
- **Full Compliance** – CHAS approved and Builder's Profile compliant, with detailed Health & Safety, Environmental, and Corporate Responsibility policies
- **End-to-End Service** – from specification and surface prep to installation and aftercare, we manage every stage seamlessly
- **Specialist Team** – qualified installers and coordinators who understand precision, quality, and on-site professionalism

With **Fitout Flooring**, you gain a partner who combines **technical excellence with genuine care**, ensuring every installation delivers performance, safety, and style - **every time**.

Let's Talk Flooring.

Whether you're planning a refurbishment, a new build, or need help specifying the right product - **our team is here to help.**

Phone: 01273 123 456

Email: info@fitoutflooring.co.uk


Website: www.fitoutflooring.co.uk

Address: Fitout Flooring, Unit 8 IDEAL, Sample Oak Lane, Chilworth, Guildford, GU4 8QW

We proudly **deliver commercial flooring solutions across the entire UK**, with projects completed nationwide.

Russell Carpenter


Sales & Contracts Director

 07976 757 333

 russell@fitoutflooring.com

Nick Lawrence


Head of Estimating & Operations

 07745 200412

 nick@fitoutflooring.com

Theresa Daniel


Financial Director

 07830 020 320

 theresa@fitoutflooring.com

Jasmine Waller

Sales & Marketing

 07471 939 948

 jasmine@fitoutflooring.com

